

Parkinson's in England in 2015/16



108,000

people with Parkinson's living in England



64,683

Total emergency admissions



38% of people with Parkinson's (41,094) were admitted as an emergency

Total emergency admissions cost

£119million



1.57x

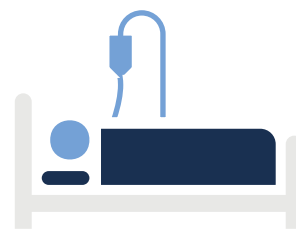
average number of emergency admissions per person needing emergency care

Emergency care accounts for...

67% of Parkinson's admissions



72% of Parkinson's hospital costs



11.8 days

Average length of stay

£1,840

Average emergency admission cost

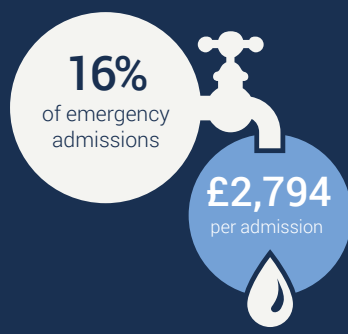
Some of the most common reasons for emergency admissions were preventable ones like urinary tract infection and falls but Parkinson's dementia is also costly.

Falls



£29m
on emergency admissions

Urinary tract infections



16%
of emergency admissions

£2,794
per admission

Parkinson's dementia



£15m
on emergency admissions



Wilmington Healthcare

www.nhis.com | www.wilmingtonhealthcare.com