

Time matters in MS

Establish a new MS service in 10 months

Introduction

Baseline

- East Sussex NHS has a population of 1000 MSers High regional variance
- Msers have access only to injectables
- No capacity from the Hub so not possible to refer
- Two sites with no coordinated care
- One MS nurse in one site
- Two part time community MS nurses in the other site
- No database
- No coordinated safety monitoring
- No Research

Objective

Action

- **Develop a new MS service**
- **Reduce the MDT variance**
- **Empower the people**

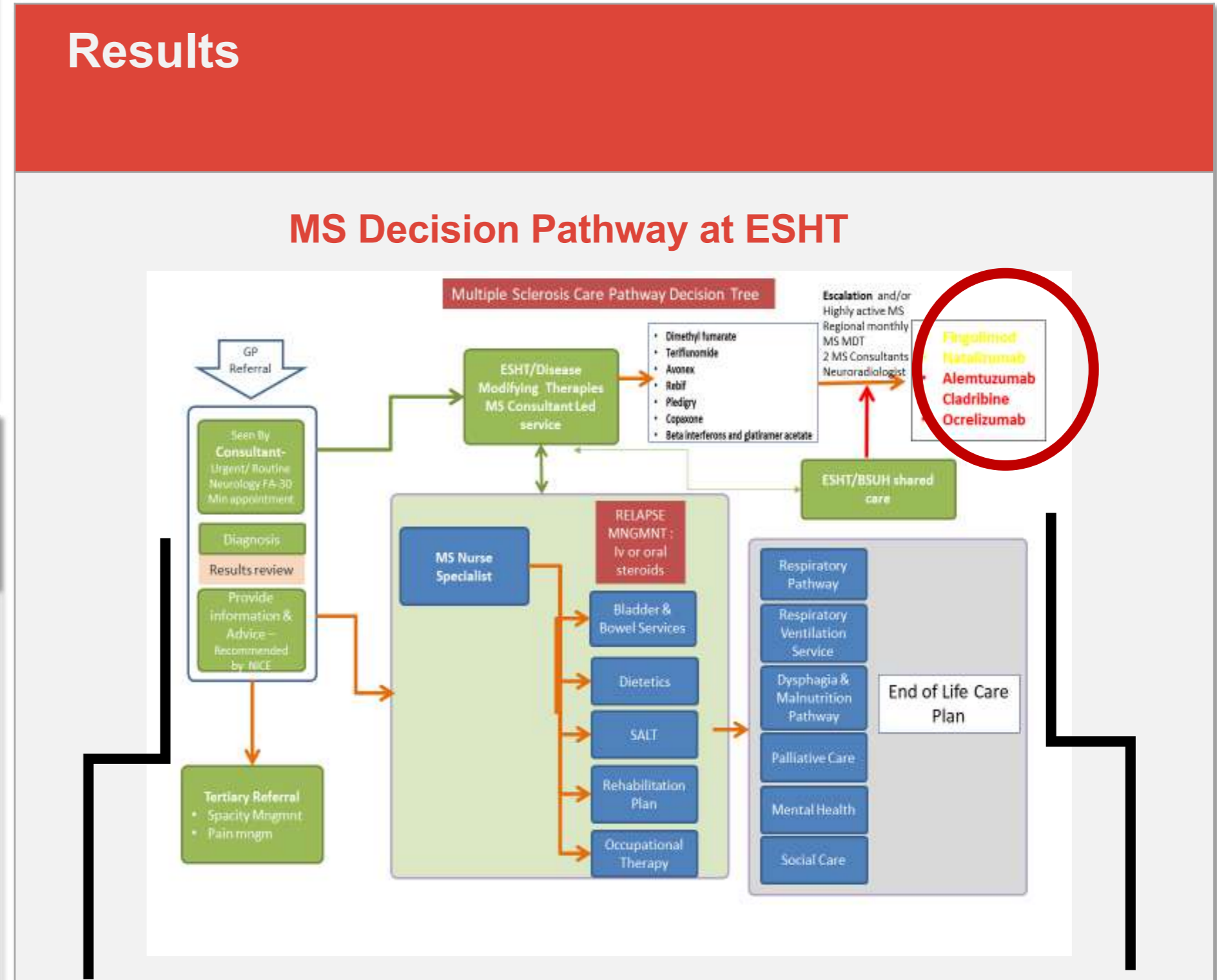
Service development

Reduce regional variation in DMT prescribing

- **Alignment with BSUH**
 - Monthly MS MDTs for complex cases with 2 MS Specialists and specialist Neuroradiology input
 - Proposed shared care for Alemtuzumab and Mavenclad to develop
 - Meetings to promote common strategies and regional action plans
 - Exchange of data, promote Research and Education
 - Elaborate common pharmacovigilance tactics

Reduce local variation in DMT prescribing

- **Subsume DMT responsibility at EHST**
 - Prescribe available blueteq treatments ensuring safety
 - Promote education, disseminate information to health care professionals
 - Provide DMT information to patients and support their engagement to their care
 - Provide local MS multidisciplinary meetings with General Neurologists and Health care teams to promote quality control and harmonisation with National guidelines
 - Update protocols



Robust Prescribing STRATEGY and shared decision-making

BLUETEQ AND LOCAL MS DATA BASE

Use data to improve MS clinical services

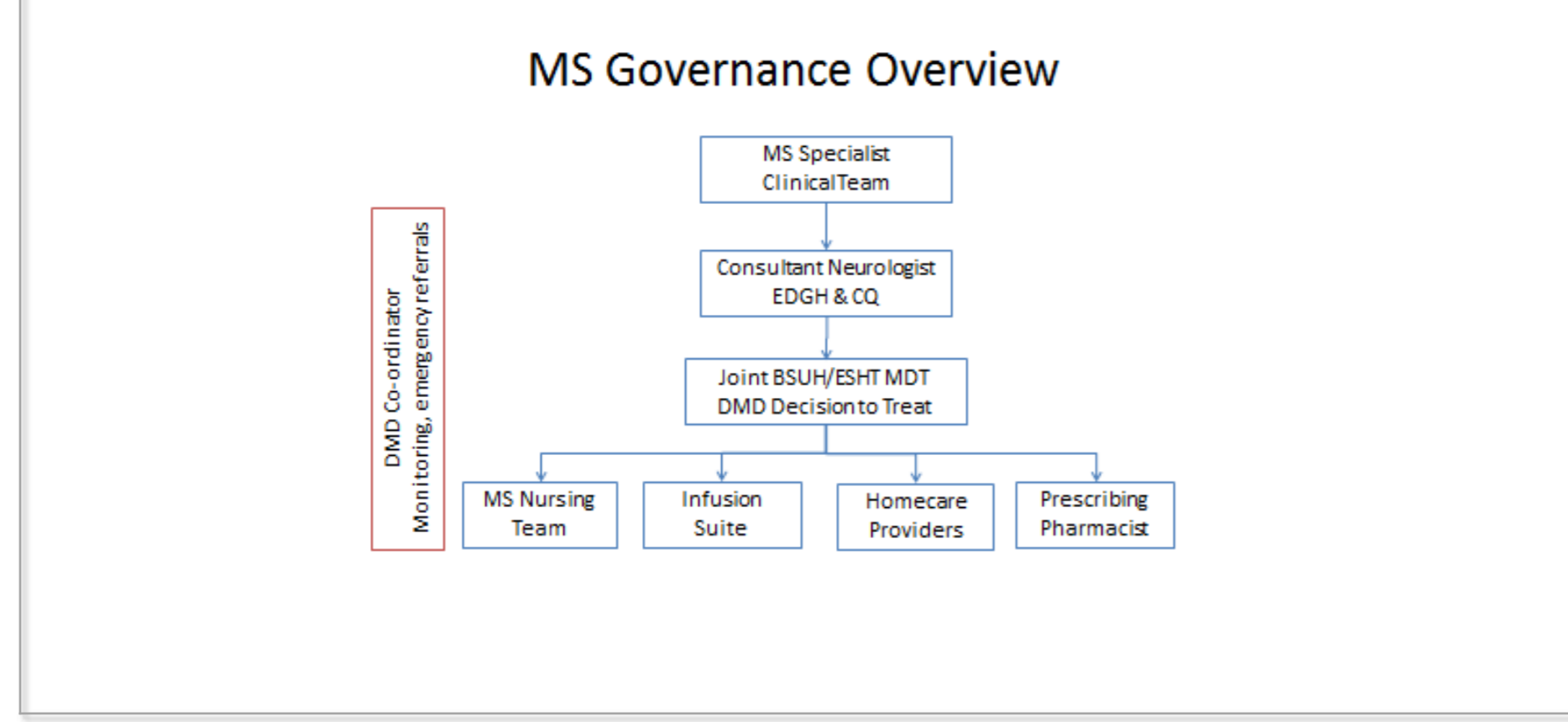
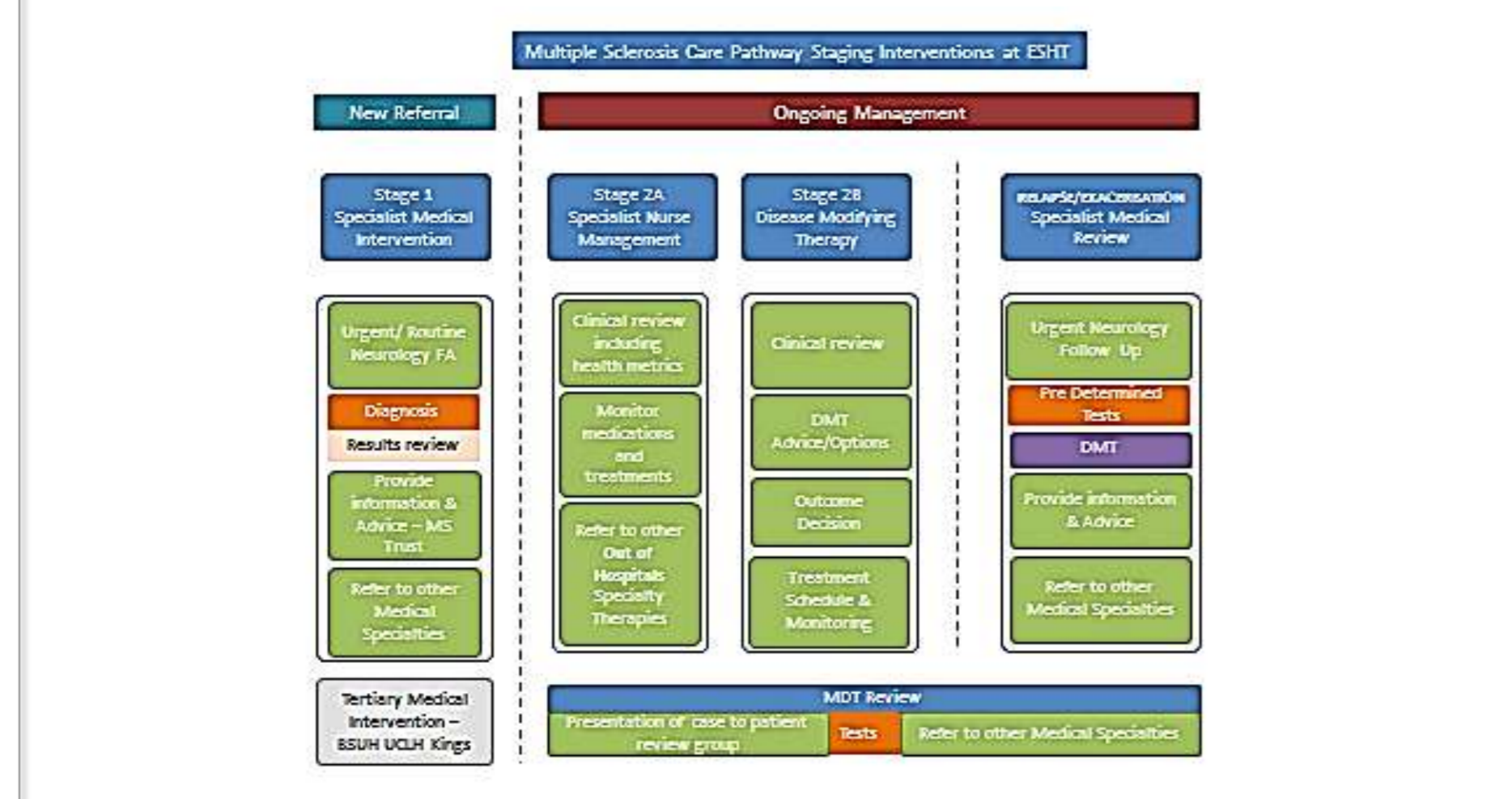
- To monitor patients on DMTs
- To measure DMT usage
- To measure number of MRIs
- To measure number of clinical coded actions
- To measure number of blood tests currently not commissioned
- To measure admissions under Neurology
- To exchange data with our Network partners
- To monitor disability and plan ahead

Engagement of the people

'More about MS'
1st Conquest Forum for People living with MS

Department of Neurology
NHS East Sussex Healthcare
NHS Trust

Invest in Research



Conclusions

- **NHS local forces are able to change and deliver efficient MS services**
- **Team Work is paramount**
- **Engage people and empower Healthcare professionals builds the right bonds**

